



Aficio™ 3228C/3235C/3245C



**Multifunctional Strength
and Colour on Demand**

How well do you share?

RICOH
Image Communication

The Economy of B&W & the Power of Colour

Today's business world is increasingly tough and pressure is on the rise. Reports have to be ready instantly, presentations need to be professionally finished and documents distributed immediately. To cope with these increasing demands, your productivity needs a boost. Ricoh, the world leader in sophisticated multifunctionality, presents the Aficio™3228C, Aficio™3235C, and Aficio™3245C: high performance document devices that will put you in the lead. These systems come with versatile finishing, cost effective faxing, 'scan-to-email' via LDAP and document management functionalities. And they offer a touch of colour to make your reports easier to read and your proposals more attractive. The benefits of colour without sacrificing the economy of black-and-white. Combine these amazing strengths and you obtain a system that will make you stand out and break through office productivity barriers!

Key Features.

- **Fast print speeds:**
Aficio™3228C: 28ppm (b/w)
24ppm (colour)
Aficio™3235C: 35ppm (b/w)
28ppm (colour)
Aficio™3245C: 45ppm (b/w)
35ppm (colour)
- **Fast warm up time of 99 seconds**
- **Trayless auto duplexing**
- **Maximum paper capacity of 3,100 sheets**





Cut Paper and Costs.

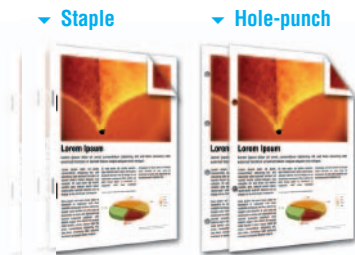
Reduce paper usage and you scale down costs while minimising the impact on the environment. With the tray-less auto duplex function you can produce unlimited double-sided output without the loss of speed.

Safeguard Access and Information.

To protect the interests of your work environment, the Aficio™3228C/3235C/3245C are equipped with advanced access limitation and security functionalities. Using your existing Windows® network login infrastructure, you can prevent unauthorised machine use and restrict colour usage.

Protect Your Data.

To avoid industrial spying and information leaks, Ricoh presents the Data Overwrite Security Unit. This optional functionality erases the temporary data on the systems' Hard Disk Drive. Additionally, all data communication from and to the system can be encrypted.



▼ Staple

▼ Hole-punch

Versatile Finishing & Booklet Creation.

The choice is yours for professional finishing: the 2,000-sheet multi-tray finisher to staple and punch or the 1,000-sheet booklet finisher to create attractive sales, training or presentation material.



Flexible and Efficient Ways to Distribute Documents.

Distributing larger documents can be tedious. The Aficio™3228C/3235C/3245C offer two efficient solutions:

- **Scan-to-email:** send scanned files to any email address in the world and use LDAP to automatically access all company email addresses.
- **Scan-to-folder:** send larger documents to a client folder across the network.

Our Earth, Our Tomorrow.

The Aficio™3228C/3235C/3245C reflect Ricoh's commitment to the environment through the usage of toxic free materials*. Significant energy savings are also obtained thanks to advanced new power saving modes (ready in 99 seconds from off mode and 30 seconds recovery time from low power mode). These systems, however, take it one step further by adopting the polyester x polymerisation toner (PxP™) which uses less energy to produce particles than conventional toners. As a result, carbon dioxide emissions during the production process are reduced by approximately 30%.

*In compliance with EU RoHS directive (RoHS: Restriction of Hazardous Substances, effective from July 2006).



Auto Reversing Document Feeder



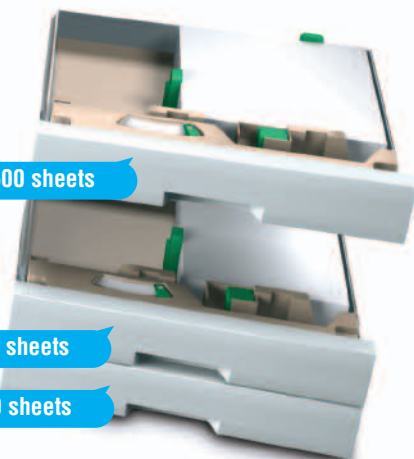
Compact & Easy to Use.

The Aficio™3228C/3235C/3245C combine a variety of capabilities yet remain as compact and easy to use as your average black and white system. Whether printing, copying, faxing or scanning, any user can easily perform tasks using the large touch screen.

500 sheets

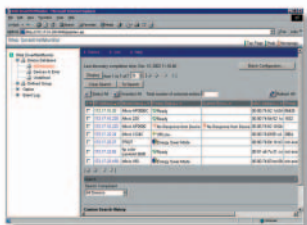
500 sheets

500 sheets



Advanced Device Monitoring.

Using Web SmartDeviceMonitor™, the status of networked peripherals can be monitored and checked through web browsers. Additionally, IT managers and network administrators can set user privileges, obtain complete job statistics and restrict usage.



Make Powerful Impact with Colour.

Enhance the overall impact of documents by using colour and gain a competitive edge. According to research, colour communicates more effectively than black-and-white:

- Colour increases willingness to read by up to 80%
- Colour enhances learning and improves retention by more than 75%
- Colour communicates 70% faster than black-and-white

Presentations, mailings, newsletters, spreadsheets – you name it! They all become more recognisable, attractive and readable.





Your office equipment has to be able to keep pace in your corporate department or busy workgroup. Meeting deadlines is the Aficio™3228C/3235C/3245C's strength. Whether printing, copying, scanning or faxing, these systems offer performance and efficiency without compromise. Add versatile network and software support and you will quickly experience 'Office Nirvana' as these systems help you do business more productively than ever before.

Breakthrough Performance and Versatility

Accelerate Your Business.

More speed means more efficiency. Black-and-white documents are on your desk at 28/35/45 ppm, colour output at 24/28/35 ppm. A short warm up time and first output speed further reduce waiting time.

New PxP™ Toner for Sharper Quality.

Copying multi page documents or printing large files? The systems' maximum paper capacity of 3,100 sheets allows you to continue your work without refill interruptions while maintaining the same high quality. The new PxP™ toner guarantees exactly that. Thanks to smaller and more uniform toner particles, image quality is sharper than when using conventional toner.

Cost Saving Internet Faxing.

Using the Internet for long distance faxing has major advantages. By sending fax messages to PCs in email format, you reduce costs while enhancing your communication capabilities and document quality.

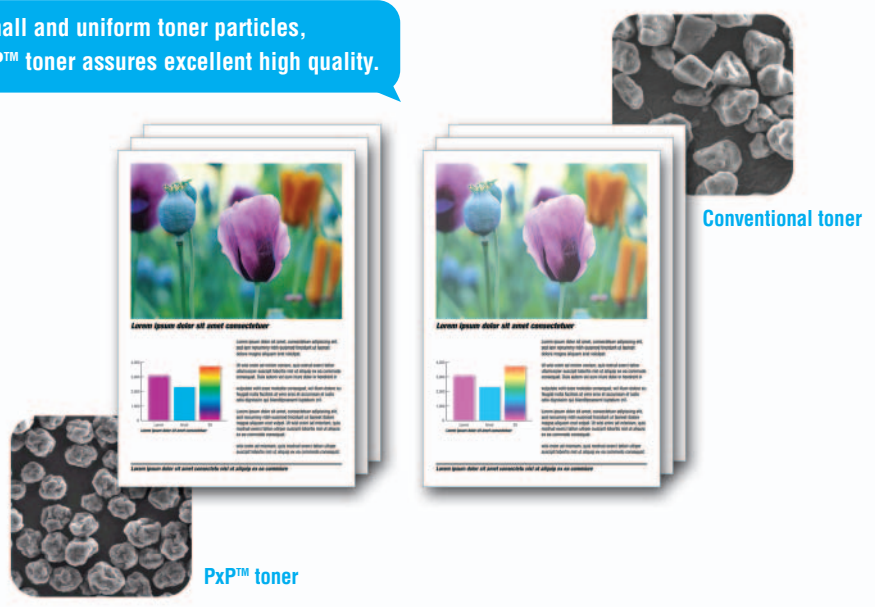
Fax Directly from Your PC.

With the LAN fax function, you can send fax messages directly from your own networked PC. To reduce the distribution of printed faxes, incoming faxes can be automatically forwarded by email. You can even receive faxes outside the office, via your laptop.

Save Time and Costs.

Designed to save time and costs, the multifunctional Aficio™3228C/3235C/3245C take over the workload of multiple dedicated devices. Next to offering excellent black-and-white functionalities, these systems provide you with the ultimate feature for today's offices: affordable colour. Colour output is no longer a luxury, it can be created in house on demand. With an attractive purchase price and only one set of consumables, Total Cost of Ownership is competitive. You can also set and retrieve to default output in black-and-white and can limit colour to those who need it via Ricoh's 'User Code Access'.

Thanks to its small and uniform toner particles, Ricoh's new PxP™ toner assures excellent high quality.



Specifications

Aficio™ 3228C/3235C/3245C

Copier

Copying process:	Laser beam scanning and electro photographic printing
Copy speed:	
B/W:	28/35/45 copies per minute
Colour:	24/28/35 copies per minute
Resolution:	600 dpi
Multiple copy:	Up to 999
Warm-up time:	99 seconds
First output speed:	
Aficio™3228C/3235C:	B/W: 8 seconds Colour: 10 seconds
Aficio™3245C:	B/W: 6 seconds Colour: 8 seconds
Zoom:	25 – 400% (in 1% steps)
Memory:	
Standard:	1,024 MB + 80 GB Hard Disk Drive
Paper input capacity:	
Standard:	2 x 500-sheet trays 1 x 100-sheet bypass tray
Maximum:	3,100 sheets
Paper output capacity:	
Maximum:	2,600 sheets
Paper size:	A6 – A3 (A3+ via bypass tray)
Paper weight:	
Paper trays:	60 – 105 g/m ²
Bypass tray:	60 – 163 g/m ²
Dimensions (W x D x H):	670 x 698 x 859 mm
Weight:	Less than 120 kg
Power source:	220 - 240 V, 50/60 Hz
Power consumption:	
Operation:	Maximum 1.68 kW
Energy saver mode:	
Aficio™3228C:	Less than 130 W
Aficio™3235C/3245C:	Less than 135 W

Scanner

Scan speed:	Max. 50 originals per min (MH, A4)
Resolution:	600 dpi full colour (1,200 dpi TWAIN, B/W/greyscale)
Original size:	A5 – A3
Output formats:	PDF/JPEG/TIFF
Bundled drivers:	Network, TWAIN
Scan-to-email:	SMTP, TCP/IP
Destination addresses:	Max. 500 per job
Stored destination:	Max. 2,000
Address book:	Via LDAP or locally on HDD
Scan-to-folder:	SMB or FTP protocol (with login security)
Destination:	Max. 50 folders per job
Stored destination:	Max. 2,000

Printer

Print speed:	
B/W:	28/35/45 prints per minute
Colour:	24/28/35 prints per minute
Printer language:	
Standard:	PCL5c, PCL6, RPCS™
Optional:	Adobe® PostScript® 3™
Resolution:	1,200 x 1,200 dpi 1,800 x 600 dpi (equivalent)
Interface:	
Standard:	USB 2.0 Ethernet 10 base-T/100 base-TX
Option:	Bi-directional (IEEE 1284) FireWire (IEEE 1394) Wireless LAN (IEEE 802.11b) Bluetooth
Network protocols:	TCP/IP, IPX/SPX, SMB Appletalk
Supported environments:	Windows®95/98/Me/ NT4.0/2000/XP/Server 2003 Novell® NetWare® 3.12/3.2/4.1/4.11/5.0/5.1/6 UNIX Sun® Solaris 2.6/7/8/9 HP-UX 10.x/11.x/11iv1/11i SCO OpenServer 5.0.6 RedHat® Linux 6.x/7.x/8.x/9.x/Enterprise IBM® AIX v4.3/5L v5.1/5L v5.2 Macintosh 8.6 or later (OS X Classic) Macintosh X v10.1 or later (native mode)

Software

- SmartDeviceMonitor™
- Web SmartDeviceMonitor™
- Web Image Monitor™
- DeskTopBinder Lite™
- ScanRouter Lite™

Fax (option)

Circuit:	PSTN, PBX
Compatibility:	ITU-T (CCITT) G3 ITU-T (T.37) Internet fax ITU-T (T.38) IP fax
Modem speed:	Max. 33.6 Kbps
Resolution:	
Standard/detail:	200 x 100/200 dpi
Maximum:	400 x 400 dpi (option)
Compression method:	MH, MR, MMR, JBIG
Scanning speed:	Less than 0.86 seconds (200 x 100 dpi, A4)
Memory capacity:	
Standard:	4 MB
Maximum:	28 MB
Memory backup:	Yes

Other Options

- Platen cover
- 80-sheet Auto Reverse Document Feeder
- 1 x 500-sheet paper tray
- 2 x 500-sheet paper trays
- 2,000-sheet large capacity tray
- 350-sheet multi-bin tray
- 2,000-sheet multi-tray finisher
- 1,000-sheet finisher
- Adobe® PostScript® 3™
- Bi-directional (IEEE 1284)
- FireWire (IEEE 1394)
- Wireless LAN (IEEE 802.11b)
- Bluetooth
- 2nd G3 port
- Professional software solutions
- Data Overwrite Security Unit



Certified Environmental Management
ISO 14001: Lic C10297
Standards Australia



Quality Endorsed Company
ISO 9001: Lic QEC3297
Standards Australia



RICOH
Image Communication

